

Rejoice in the Lord always

The Bell anthem

Philippians iv, 4-7

Henry Purcell (1659-1695)

Ed.: José Ángel Ruiz

"Prelude twice"

[Violin I] (tr)

[Violin II]

[Viola]

[Bassi] (Vc. Cb. Org.) (tutti)

5

10 (tr)

16 Verse

Alto
Re - joice in the Lord al - way, and a - gain I say, re - joice. Re -

Tenor
Re - joice in the Lord al - way, and a - gain I say, re - joice. Re -

Bass
Re - joice in the Lord al - way, and a - gain I say, re - joice. Re -

(Vc. solo)

joice in the Lord al - way, and a - gain I say, re - joice. Re -

joice in the Lord al - way, and a - gain I say, re - joice. Re -

joice in the Lord al - way, and a - gain I say, re - joice. Re -

joice in the Lord al - way, and a - gain I say, re - joice. Re -

(tutti)



* $\text{♩} \cdot \text{♩} \text{♩} = \text{♩} \cdot \text{♩} \cdot \text{♩}$ performed: $\text{♩} \text{♩} \text{♩}$ ** $\text{♩} \text{♩}$ and $\text{♩} \cdot \text{♩}$ performed: $\text{♩} \text{♩}$

"Play this last strain but once"

36

44

51

*** (with slur) performed:  or 

Violin I

Rejoice in the Lord alway

The Bell anthem

Philippians iv, 4-7

Henry Purcell (1659-1695)

Ed.: José Ángel Ruiz

"Prelude twice" (tr)

12 (tr) 16 Verse 11

28 Symphony

39 "Play this last strain but once" (tr)

49 (tr)

57 (tr)

Ritornello

64 Verse 11 76 soft Verse 9 89 Chorus 20

Violin II

Rejoice in the Lord alway

The Bell anthem

Philippians iv, 4-7

Henry Purcell (1659-1695)

Ed.: José Ángel Ruiz

"Prelude twice"



7



12 16 Verse 11

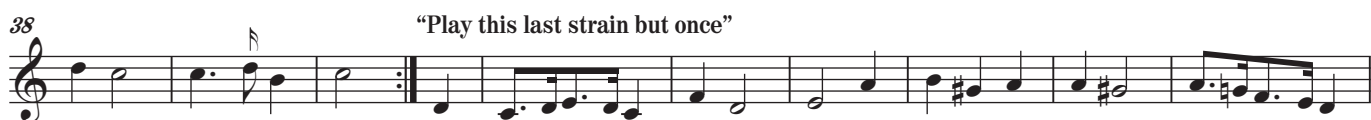


Symphony

28



38 "Play this last strain but once"



47



56



64 Verse 11 76 Ritornello soft Verse 9 89 Chorus 20



Viola

Rejoice in the Lord alway

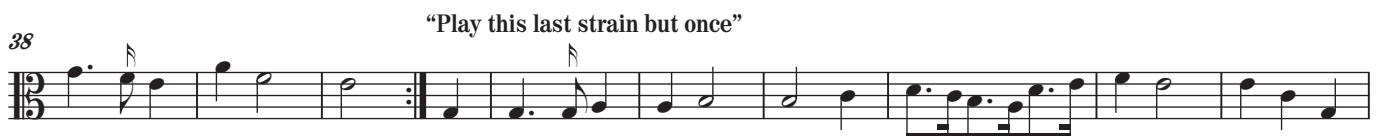
The Bell anthem

Philippians iv, 4-7

Henry Purcell (1659-1695)

Ed.: José Ángel Ruiz

"Prelude twice"



Bassi

Violoncello, Contrabbasso

Rejoice in the Lord alway

The Bell anthem

Philippians iv, 4-7

Henry Purcell (1659-1695)

Ed.: José Ángel Ruiz

"Prelude twice"

(Tutti)



6



11 Verse (Vc. solo)



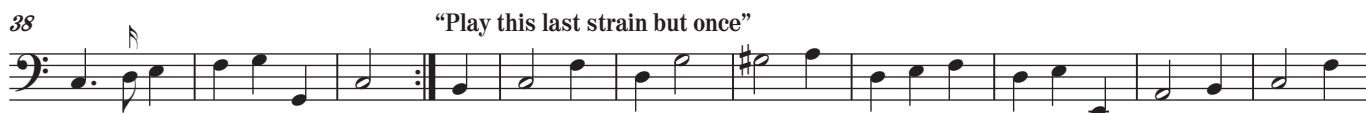
19



28 Symphony (Tutti)



38 "Play this last strain but once"



48



57



64 Verse (Vc. solo)



76 Ritornello Verse (Tutti) (Vc. solo)



87 Chorus (Tutti)



98 Verse Chorus Verse Chorus (Vc. solo) (Tutti) (Vc. solo) (Tutti)



Organ

Rejoice in the Lord alway

The Bell anthem

Philippians iv, 4-7

Henry Purcell (1659-1695)

Ed.: José Ángel Ruiz

"Prelude twice"

Musical notation for the first system of the organ prelude, measures 1-5. The piece is in common time (C) and features a treble and bass clef. The melody in the treble clef begins with a whole note chord, followed by a series of eighth and sixteenth notes. The bass line consists of a steady eighth-note accompaniment.

6

Musical notation for the second system of the organ prelude, measures 6-10. The treble clef continues with a melodic line, while the bass clef maintains the eighth-note accompaniment. The piece concludes with a final chord in the treble.

11

Verse

Musical notation for the third system of the organ prelude, measures 11-17. This system includes a repeat sign and a change to 3/4 time. The treble clef features a melodic line with a repeat sign, and the bass clef continues with the accompaniment.

18

Musical notation for the fourth system of the organ prelude, measures 18-27. The treble clef continues with a melodic line, and the bass clef maintains the eighth-note accompaniment.

28

Symphony

Musical notation for the fifth system of the organ prelude, measures 28-37. This system includes a repeat sign. The treble clef features a melodic line with a repeat sign, and the bass clef continues with the accompaniment.

38

"Play this last strain but once"

Musical notation for the sixth system of the organ prelude, measures 38-46. This system includes a repeat sign. The treble clef features a melodic line with a repeat sign, and the bass clef continues with the accompaniment.

47

Musical notation for the seventh system of the organ prelude, measures 47-52. The treble clef continues with a melodic line, and the bass clef maintains the eighth-note accompaniment.